

Exclusions:

- SSTI Location:**
- Underlying hardware, bone/joint infection, surgical site infection, orbital/periorbital cellulitis, peritau/periheal/perirectal infection
- Risk Context:**
- Bite-associated infection, infection associated with immersion or penetrating trauma
- Patient Factors:**
- Neutropenia (ANC < 500)

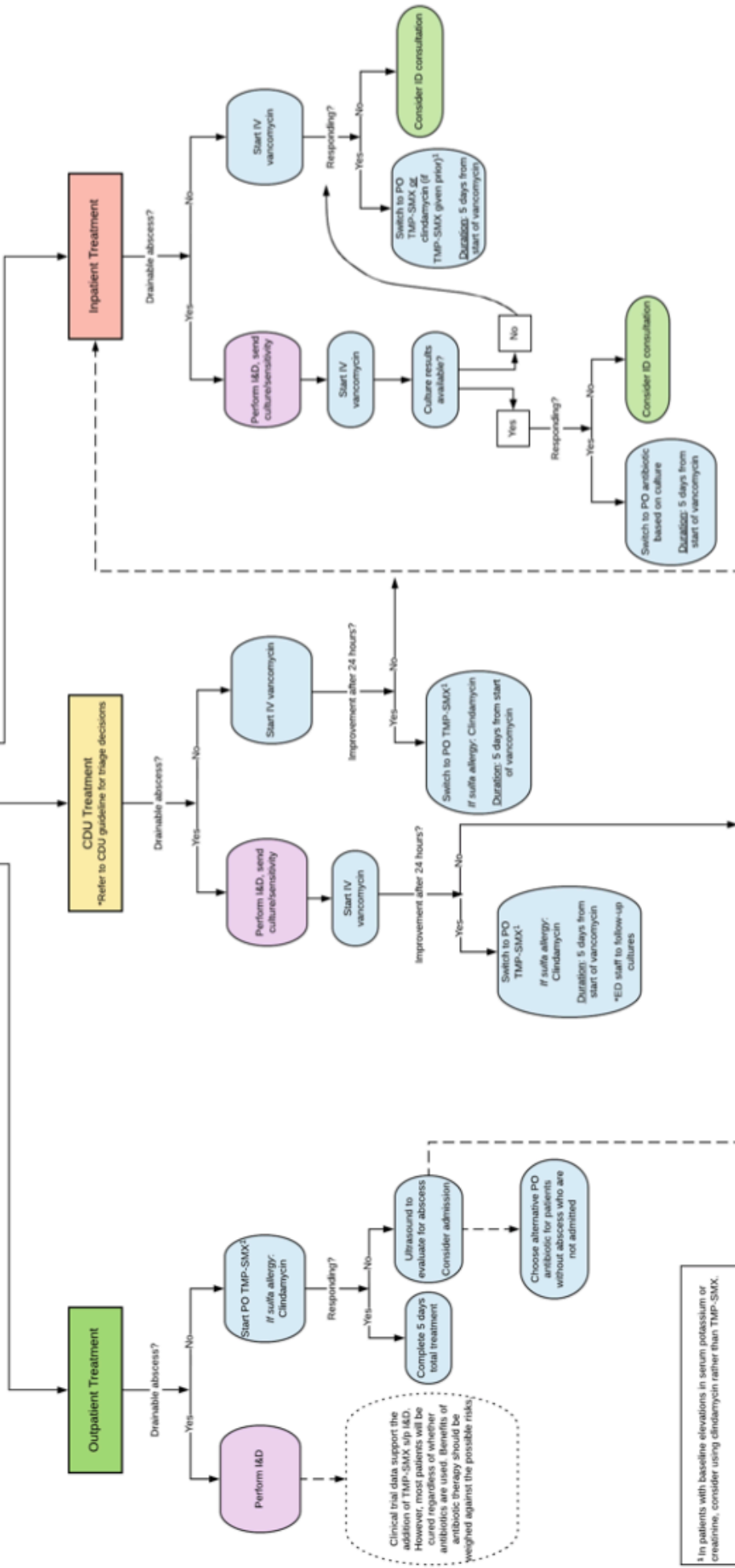
Separate oral antibiotic coverage for MRSA and Strep spp is not recommended for purulent SSTI

Management of Purulent SSTI (abscess/pustule)

*For ulcerative SSTI, refer to separate Ulcerative SSTI guideline

Concern for necrotizing infection?
 STOP! Call appropriate surgical service and consult ID

Start IV vancomycin + Piperacillin-tazobactam (UCSF/SPVA) OR erapenem (ZSFG) + Clindamycin



¹ In patients with baseline elevations in serum potassium or creatinine, consider using clindamycin rather than TMP-SMX.