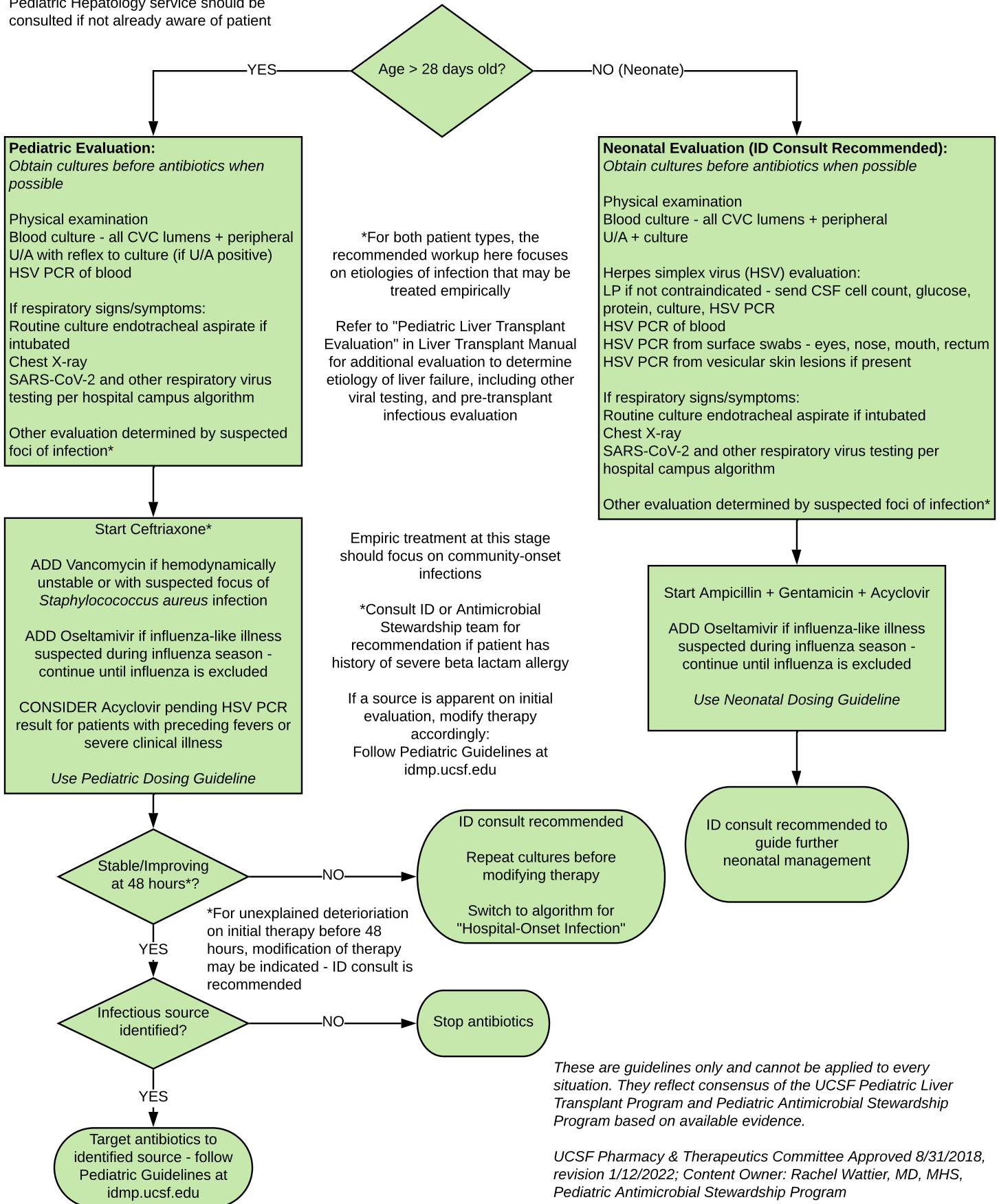


Empiric Treatment of Suspected Infection in a Previously Healthy Neonatal/Pediatric Patient with Acute Liver Failure

Applies to patients without pre-existing liver disease upon initial assessment/hospitalization

Pediatric Hepatology service should be consulted if not already aware of patient



These are guidelines only and cannot be applied to every situation. They reflect consensus of the UCSF Pediatric Liver Transplant Program and Pediatric Antimicrobial Stewardship Program based on available evidence.

UCSF Pharmacy & Therapeutics Committee Approved 8/31/2018, revision 1/12/2022; Content Owner: Rachel Wattier, MD, MHS, Pediatric Antimicrobial Stewardship Program