

**Empiric therapy in adult ESLD patients with high risk for multidrug resistant organisms\* and suspected infection: non-ICU or ICU without septic shock**

last updated 11.8.2023

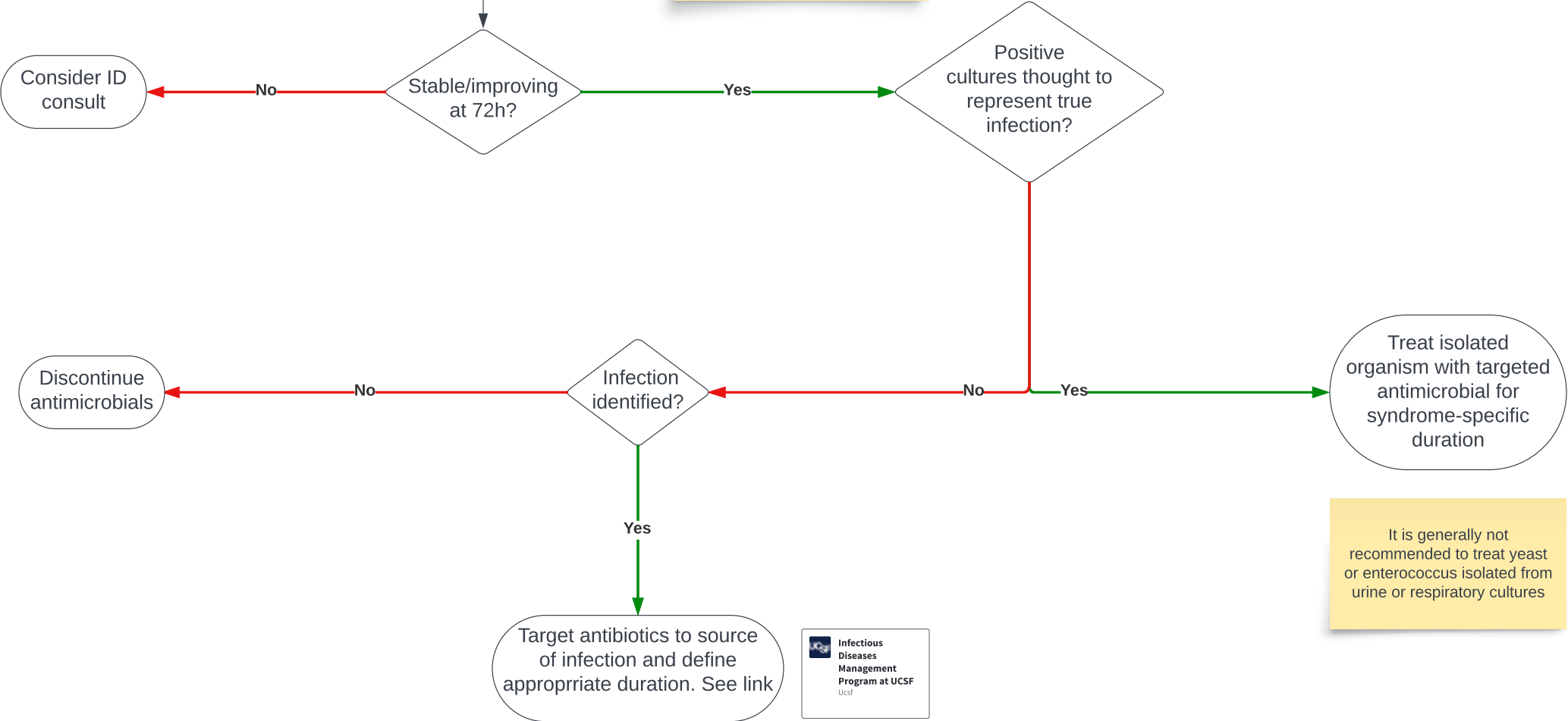
Draw Cultures PRIOR to Abx  
Start piperacillin/tazobactam  
Start linezolid

- \*Risk factors for resistance:
1. Onset >48h after hospitalization
  2. Beta-lactam use within last 90 days
  3. Quinolone SBP prophylaxis
  4. Prior drug-resistant organism

NOTE: These guidelines have been developed for use in patients with suspected infection but without a clear source. Patients with a clear syndrome/source should be treated per appropriate IDMP guidelines



Draw cultures prior to change in antibiotics  
If hemodynamically unstable, switch to ICU algorithm



It is generally not recommended to treat yeast or enterococcus isolated from urine or respiratory cultures